

Cancer Council of Pacific Islands: Update – PIHOA: April 2007

Kamal J. Gunawardane
President
CCPI

Outline

- Evolution of CCPI?
- Brief update on projects
- Barriers and challenges
- Next steps/Future of CCPI
- Implications for PIHOA

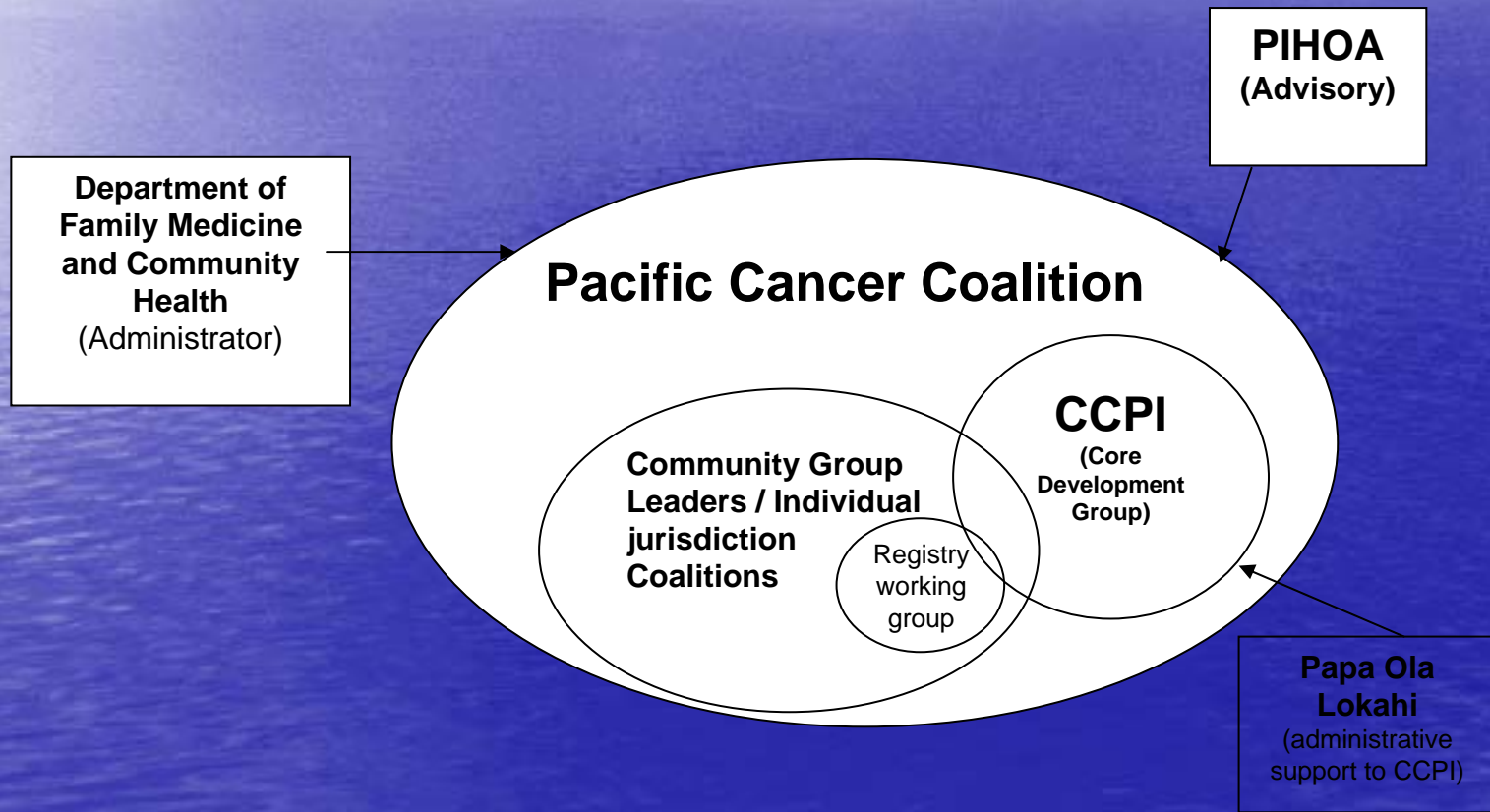
Evolution of CCPI

- Need for Cancer control
- NCI- CRCHD recognition and funding thru Papa Ola Lokahi - 2002
- UHFPRP: Needs Assessment –2002-2003/ PHD
- CCPI (Nov 2003-Pohnpei) is formalized exclusively to address the comprehensive cancer health needs in the USAPI.
- Membership: 2 HCW selected by Administration of individual jurisdictions & brings in variety
- 2 key areas recognized: (Jurisdictional /Regional) needs prioritized ? Resources

Evolution of CCPI

- Financial Resources: CDC cancer control planning grant – Palau & UH for other jurisdictions / NCI
- Community based cancer coalition is initiated for Comprehensive Cancer Control
- Process of solidifying the existence: Finalizing-Non for profit 501 (C) (3) organization status
- Recognized as regional coordinating body for Cancer by PIHOA through resolution NAHLAP: #05 08032006 – Awarded Affiliate membership of PIHOA
- CCPI selected UH DFMCH as the Administrator for CDC Implementation grant

Organizational Chart for Regional Comprehensive Cancer Control Efforts



CCPIs' approach:

- Comprehensive: covers cancer prevention/early detection/treatment/quality of life/survivorship and data quality
- Coordinated: Within jurisdictions and among Jurisdictions
- Inclusive
- Community based
- Capacity building
- Leverage/Enhance existing resources
- Advisory PIHOA priority areas: PHC-NCD /HRH, Tobacco Control, Lab & HIS etc...

Regional Priorities

- Sustainable regional entity for cancer control
- Regional comprehensive cancer control plan
- Regional cancer registry
- Regional resource center

10 Comprehensive Cancer Control Plans and Implementation Grant Applications

March 2007

- 8 Jurisdiction Plans

- American Samoa

- Guam

- CNMI

- Chuuk

- Kosrae

- Pohnpei

- Yap

- RMI

- FSM National Plan

- Regional Plan

- Palau also with their separately funded National Cancer Control Plan

- Part of regional plan

Regional Cancer Registry Proposal

2/07

Regional CCC Plan

- Incorporated into individual CCC plans and grant applications
- Submitted to CDC in March 2007
- University of Hawaii – administration and technical assistance
- Unique plan – being looked at by CDC as a possible model for regional collaboration

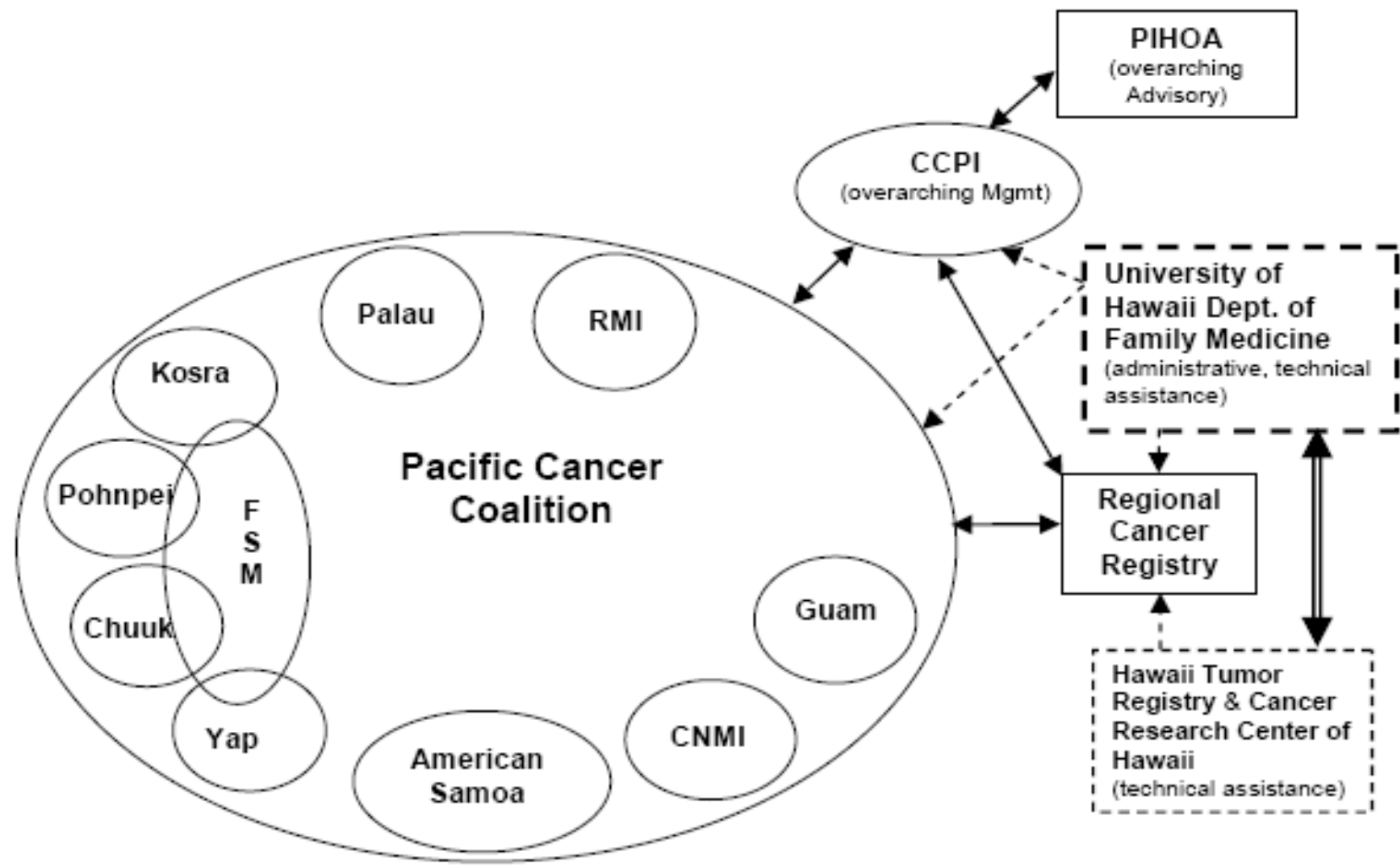
Regional CCC Plan

- Vision: A Cancer-Free Pacific
- Goals:
 - Strengthen and expand regional collaboration, planning and advocacy affecting all aspects of cancer control
 - To diagnose cancer in individuals as early as technically possible within the region
 - To improve the capacity to treat cancer effectively with the region
 - To collect, analyze and report accurate cancer-related data across the region

Pacific Regional Central Cancer Registry

- Needs Assessment done and agreed on a Regional Registry
- Grant submitted to CDC in March 2007
- Partnership between UH, Cancer Research Center of Hawaii/Hawaii Tumor Registry, UOG and all the jurisdictions
- Another unique regional collaboration

IMPLEMENTATION OF THE PACIFIC REGIONAL CCC PLAN



CCPI Next Major Steps

- Jurisdictional oversight for Comp Cancer Implementation
- Regional Oversight for Comp Cancer Implementation
- Board /Home for Regional Cancer Registry
- Regional Cancer Research Efforts
 - Lab , registry, referral, standards, training
- Development of Regional Resource Center
 - Center of Excellence for Eliminating Disparities
 - CDC funded
 - initial focus on breast and cervical cancer? Regional Cancer Treatment Center / Regional resource center for cancer and other chronic diseases

Development of Regional Resource Center

- Long term regional goal
- Serve as clearinghouse for practices and policies that work in this region
- Site for training and technical assistance

Expansion of CCC: Future possibilities for CCPI

- Center of Excellence for Eliminating Disparities
 - CDC funded
 - Targeted towards disparate racial/ethnic populations (“Pacific Islanders”)
 - Focus on specific health priority area
 - Initial focus on breast and cervical cancer
 - Can also address risk factors (Nutrition/Tobacco/Physical Activity etc...later)
 - Must have established coalition in place

Sustainability of CCPI?

- Human Resources
- Organizational development: Dynamic and on going
- Partnership: POL/UH/NCI/CDC/C-Change/PBMA/PACT/Community
- Funding for projects
- Financing the CCPIs administration?

CCPI Implications for PIHOA

- Continued support of CCPI and regional cancer activities
 - CCPI affiliate member
 - Collaborate to establish recommended minimum regional standards
 - Support plans for regional cancer resource center

Thank you!